



1889



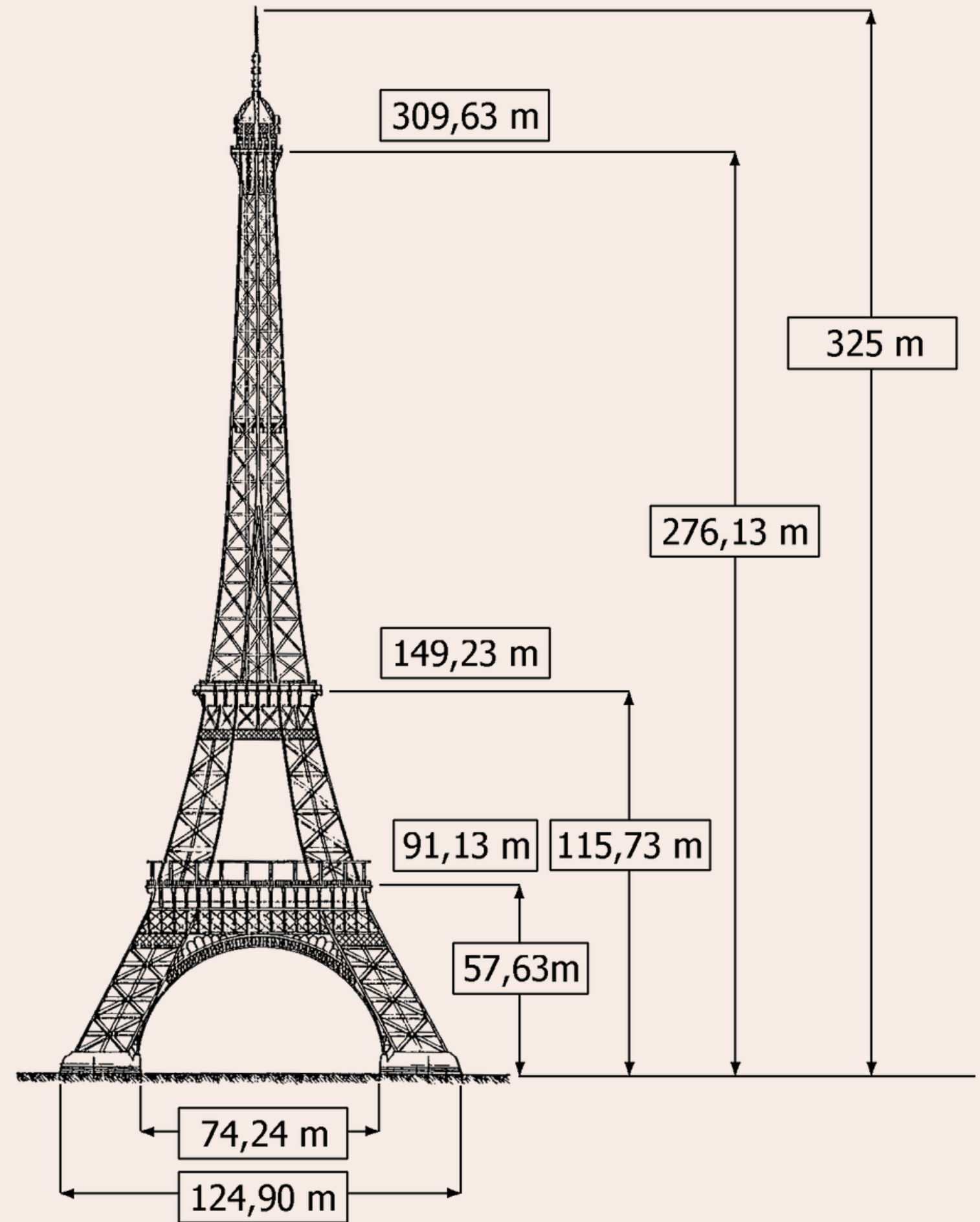
# The Eiffel Tower

Anastasia Ponamareva

# History

- It was erected on the Champ de Mars opposite the Jena Bridge
- A temporary structure for the World Exhibition in Paris.
- It was built by 300 workers
- The height is 330 meters

the architectural competition





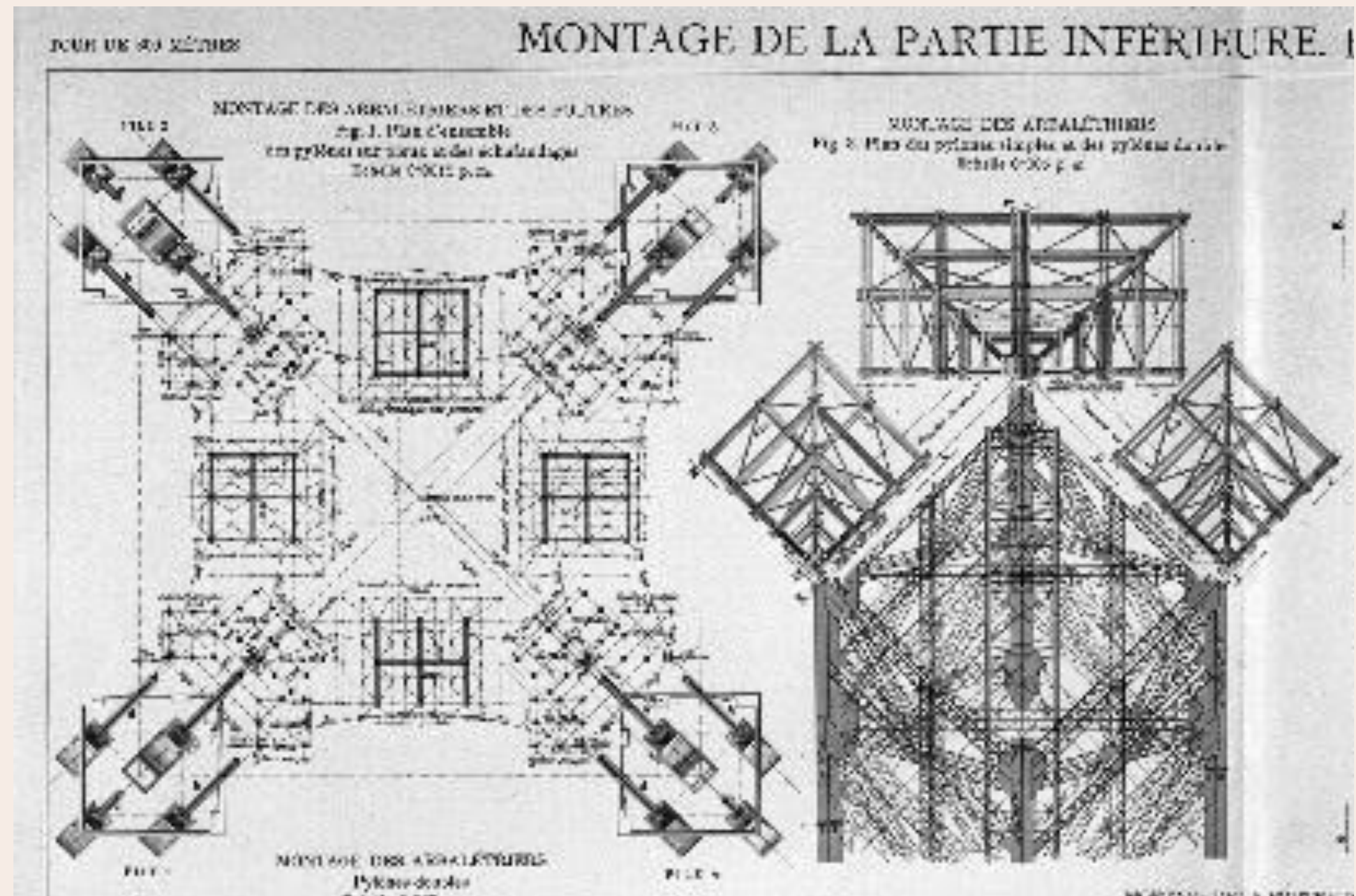
# Building

The lower floor is a pyramid formed by 4 columns connected by an arched vault

The second pyramid is a tower, also formed by 4 columns connected by a vault on which the second platform is located.

They form a pyramidal column carrying a third platform.

Lighthouse with a dome



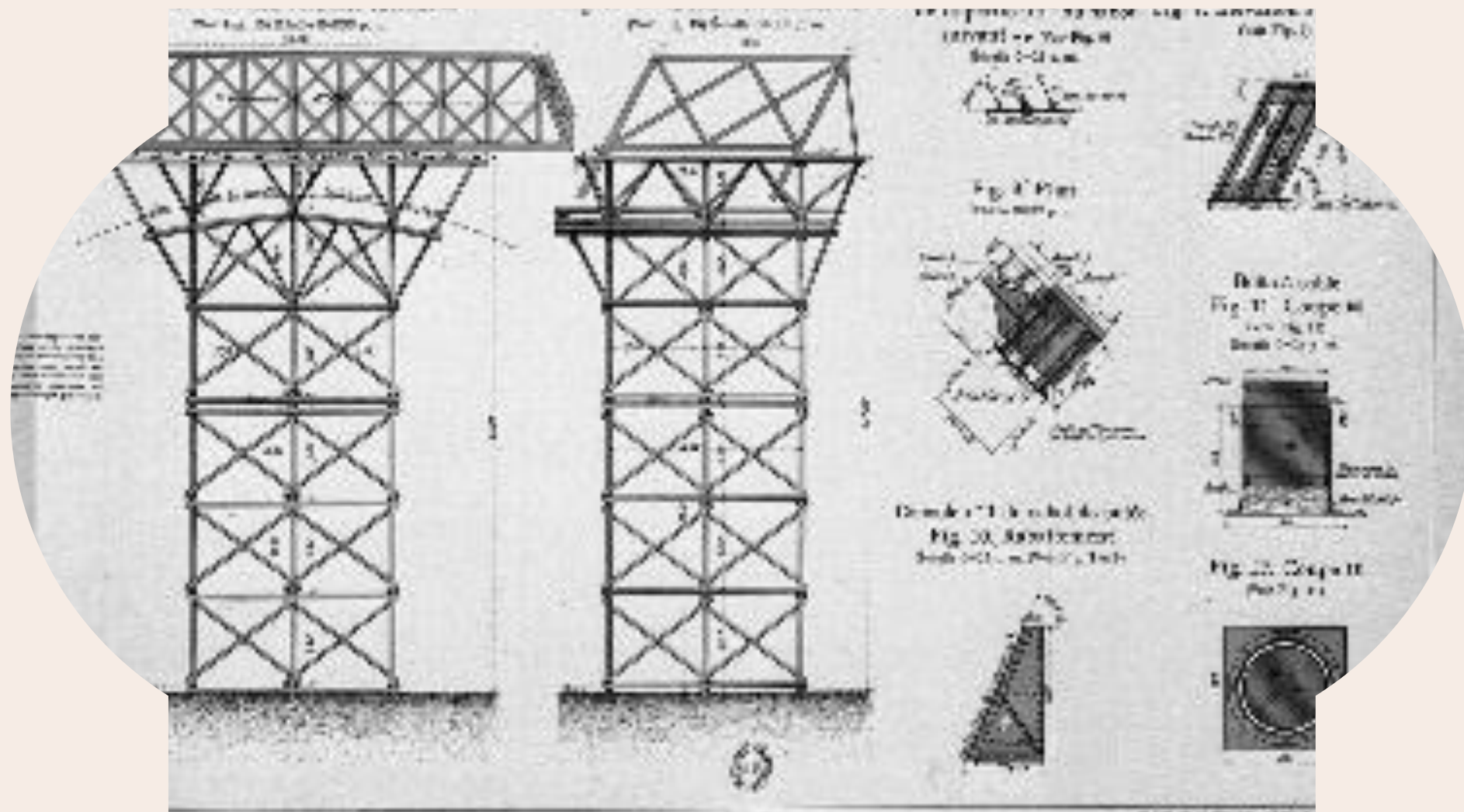
# Construction

The curvature of the monument is dictated by mathematical calculations and aesthetic considerations.

High crowns were used to lift the beams, and then special mobile cranes. They were moving along the rails laid for future elevators.

The lights were lit in 1889. It consisted of 10,000 gas lanterns, two searchlights and a lighthouse.

# The victory of the XIX century



It has shaken the world architecture twice.

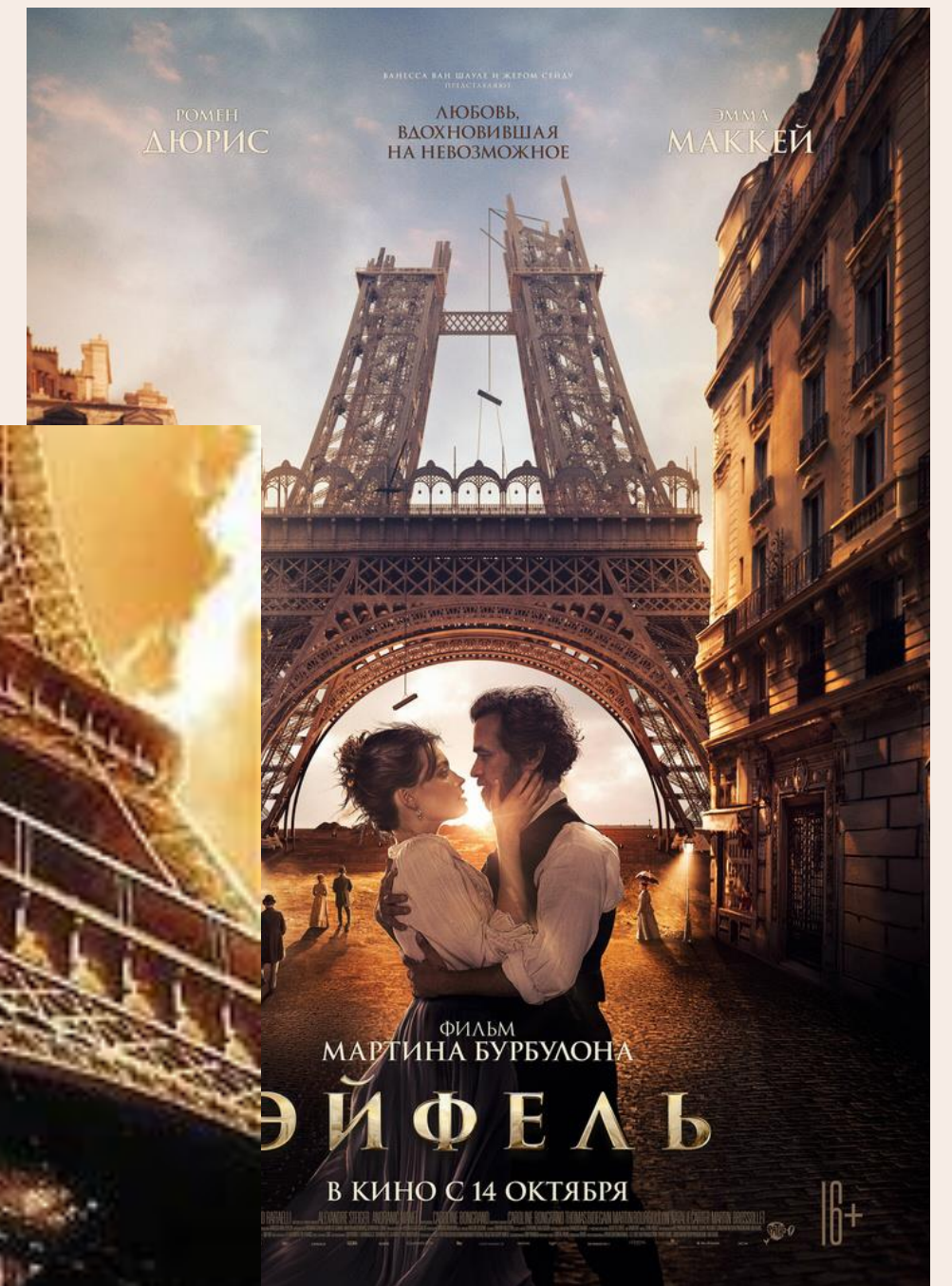
- the height is 300 meters.
- iron is the main building material.



# Now

Many films have been made  
about the tower

Influence on society and  
architecture cannot be denied







**Thanks for your  
attention!**

---